

### CHILDREN'S GARDEN

Explore, dig, water and learn about plants in this seasonal outdoor garden for children.



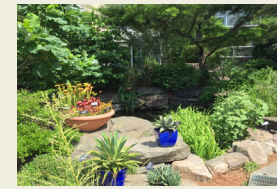
### WORLD DESERTS

Discover succulents, cacti and other plants adapted to arid environments.



### MEDICINAL PLANTS

Learn about medicinal plants from around the world.



### SOUTHERN EXPOSURE

Explore this seasonal courtyard featuring North American native plants of the Southeast and Southwest.



### ORCHIDS

Enjoy an ever-changing display of blooming orchids from a collection of over 5,000 specimens.



### MEDITERRANEAN

Explore the plants, culture and food of the world's Mediterranean climatic regions.



### RARE & ENDANGERED

Learn about rare, threatened and endangered plants and their habitats.

## THE UNITED STATES BOTANIC GARDEN

The United States Botanic Garden (USBG) is one of the oldest botanic gardens in North America and informs visitors about the importance, value and diversity of plants, as well as their aesthetic, cultural, economic, therapeutic and ecological significance. With more than a million visitors annually, the USBG strives to demonstrate and promote sustainable practices. The Garden is a living plant museum accredited by the American Alliance of Museums.

### HISTORY

More than 200 years ago, George Washington had a vision for a botanic garden in the nation's new capital city. This garden would demonstrate and promote the importance of plants to the young nation. The Garden was established by Congress in 1820 and was strengthened by collections from the U.S. Exploring Expedition (1838-1842). Since 1934, it has been administered through the Architect of the Capitol.

### LIVING COLLECTIONS

The Garden maintains approximately 65,000 plants for exhibition, study, conservation and exchange with other institutions. Noteworthy collections include economic plants, medicinal plants, orchids, carnivorous plants, cacti and succulents, and Mid-Atlantic native plants. Several historic specimens collected during the U.S. Exploring Expedition are still on display.

### CONSERVATORY

Sights, smells, sounds and textures abound in the Conservatory. From tropical rain forest to desert plants, the Conservatory highlights the diversity of plants worldwide.



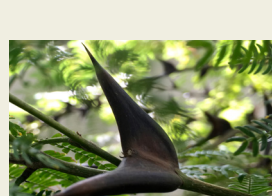
### HAWAII

Discover plants native to Hawaii, where species have adapted to live on remote volcanic islands.



### GARDEN PRIMEVAL

Experience plants reminiscent of the Jurassic era including mosses, ferns, and cycads.



### PLANT ADAPTATIONS

Examine some of the fascinating adaptations that have evolved in the plant world.



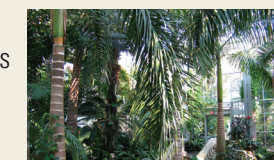
### EAST GALLERY

Learn and be inspired in this changing plant-focused exhibits gallery.



### GARDEN COURT

Discover economic plants that provide fiber, food, beverages, fragrance, wood, spices and more.



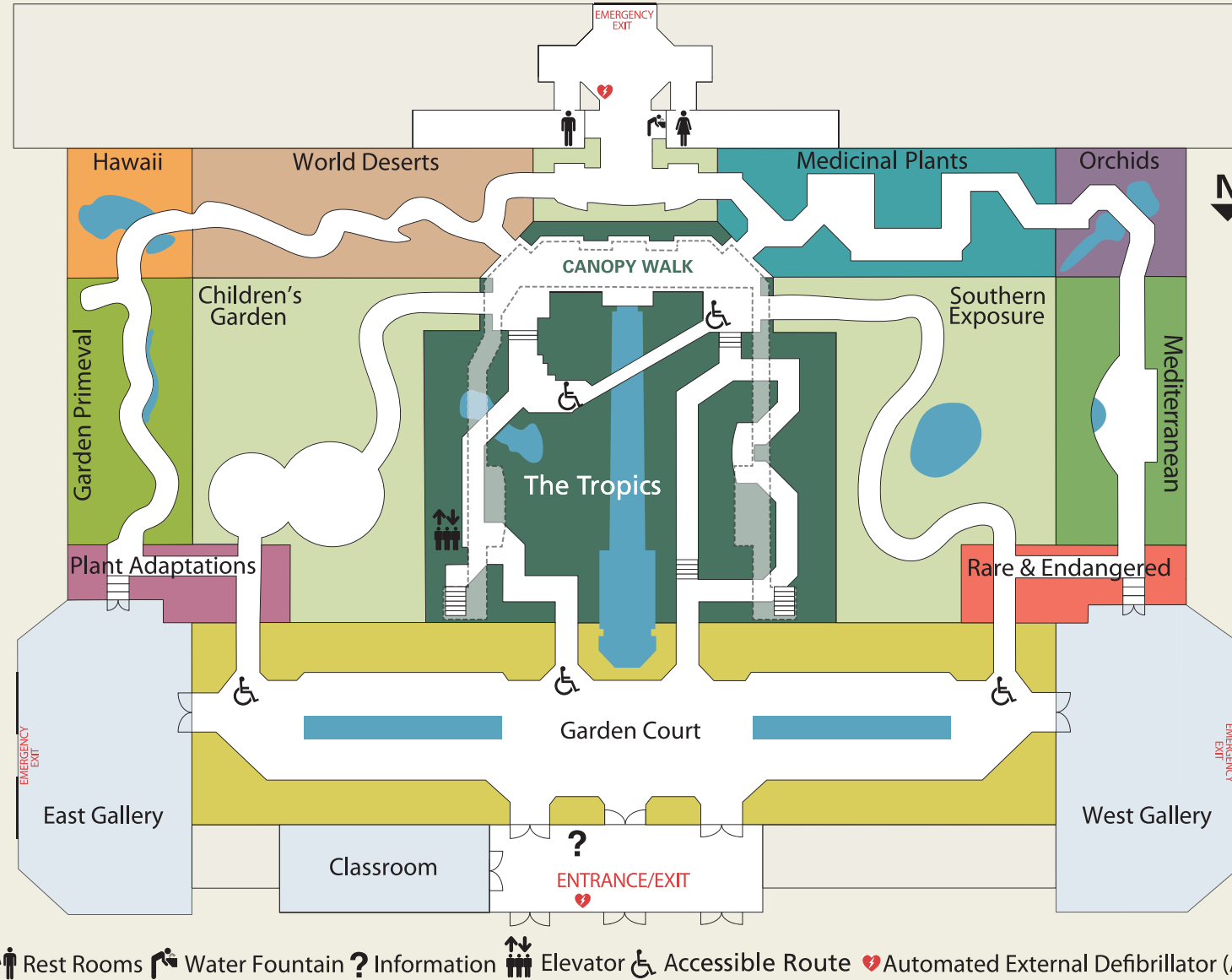
### THE TROPICS

Immerse yourself in a tropical rain forest in the canopy above and in the understory below.



### WEST GALLERY

Celebrate the many ways plants enrich human life in this changing plant-focused exhibits gallery.





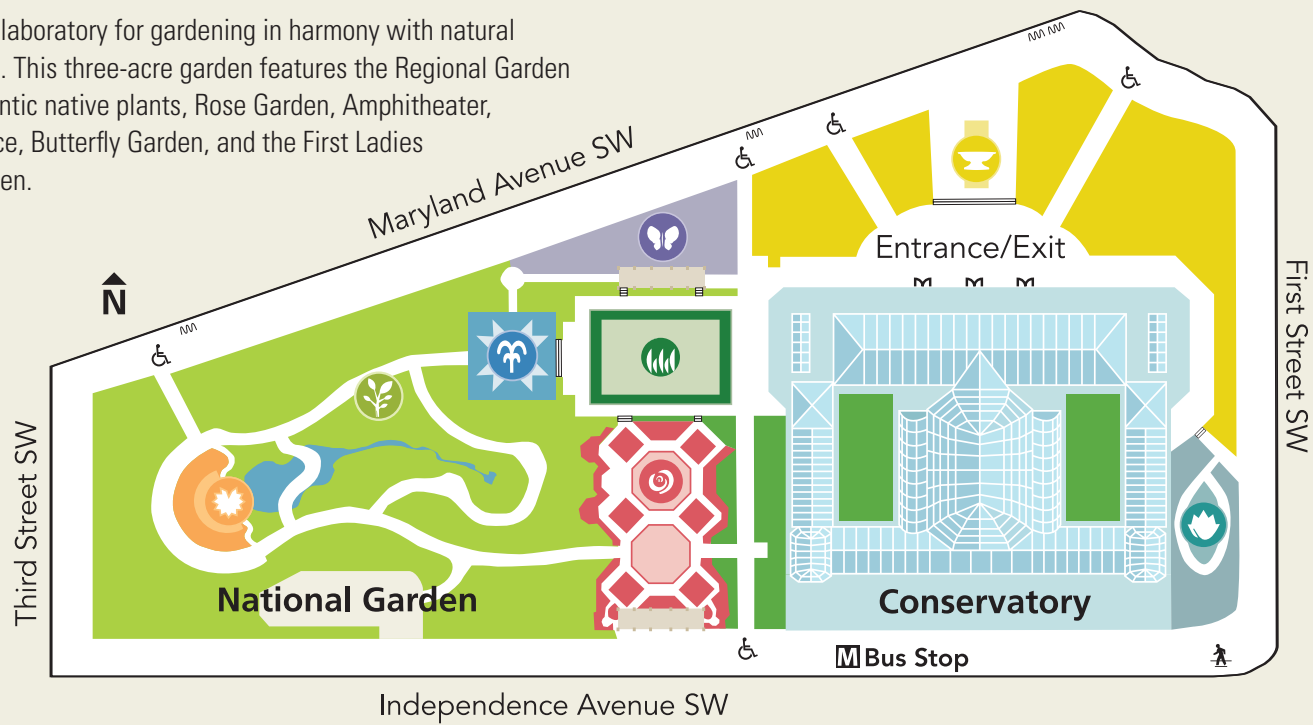
## BARTHOLDI PARK

This two-acre garden surrounds Bartholdi's historic *Fountain of Light and Water* and demonstrates beautiful and accessible gardening at a scale suitable for home landscapes. Its innovative design features native plants, conserves water, provides habitat for wildlife, and offers an accessible respite.



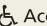
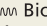
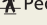
## NATIONAL GARDEN

An outdoor laboratory for gardening in harmony with natural ecosystems. This three-acre garden features the Regional Garden of Mid-Atlantic native plants, Rose Garden, Amphitheater, Lawn Terrace, Butterfly Garden, and the First Ladies Water Garden.



-  Amphitheater
-  Butterfly Garden
-  First Ladies Water Garden
-  Kitchen Garden
-  Lawn Terrace
-  Regional Garden
-  Rain Garden
-  Terrace Gardens
-  Bartholdi Fountain



-  Accessible Route
-  Bicycle Parking
-  Pedestrian Crosswalk

**Explore our three garden spaces:** the Conservatory, the National Garden, and Bartholdi Park.

**Hours:** The USBG is open 10 a.m. to 5 p.m., every day of the year. Bartholdi Park is open dawn to dusk.

**Public transportation:** Metrorail on the Blue, Silver or Orange line to the Federal Center SW station. Metrobuses #32, 34 and 36 stop behind the Conservatory on Independence Avenue. DC Circulator bus (National Mall route) stops in front of the Conservatory on 3rd Street by the Capitol Reflecting Pool.

**Accessibility:** Wheelchairs are available on request. Interpretive services can be provided with a pre-visit request.

**Plant Hotline:** Ask plant questions at (202) 226-4785 or [usbg@aoc.gov](mailto:usbg@aoc.gov)

**Photography:** Photography for personal use is permitted. Please inquire at the Visitor Information Desk for tripod permits. Commercial photography is prohibited.

**Exhibits, Education and Tours:** The Garden offers a variety of exhibits, programs, and tours for visitors of all ages on the role of plants in supporting Earth's diverse ecosystems and enriching human life. Visit [www.usbg.gov](http://www.usbg.gov) for more information.

The facilities and gardens are not available for private functions. Smoking is not allowed in the Garden.

**For more information:**

**Address:** 100 Maryland Avenue SW, Washington, D.C. 20001

**Contact:** (202) 225-8333, [usbg@aoc.gov](mailto:usbg@aoc.gov)

**Website:** [www.usbg.gov](http://www.usbg.gov)